

ANTENNAS FOR ALL NEEDS

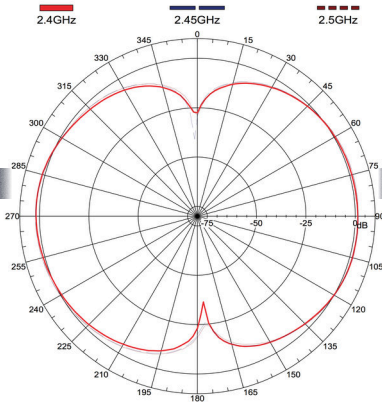
Guide to outdoor range

WIRELESS SOLUTION
MADE IN SWEDEN



There is also an indoor range!

W-DMX™ OUTDOOR 3



Best use:

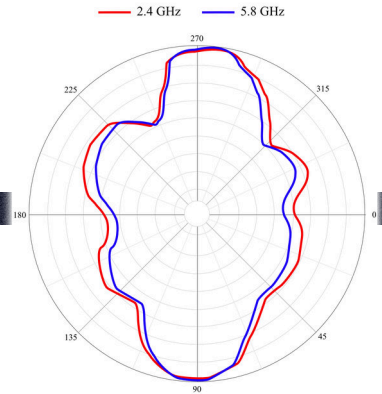
Standard antenna shipped with **Whitebox** series. **Robust** and **touring proofed** antenna, ideal for medium sized and large sized **events** and **installations**. Dual-band use.

Article No.	A40518G4W
Type	Omni
Frequency	2.4 GHz / 5.8 GHz
Boost	3 dBi
Radiation (HxV)	360° x 360°
Connection	N Female Incl. Cable 75cm N Male - N Male

~ 700m (765 yards)

- Events
- Touring
- Façades
- Installation
- Dual Band
- Architectural

W-DMX™ OUTDOOR 6



Best use:

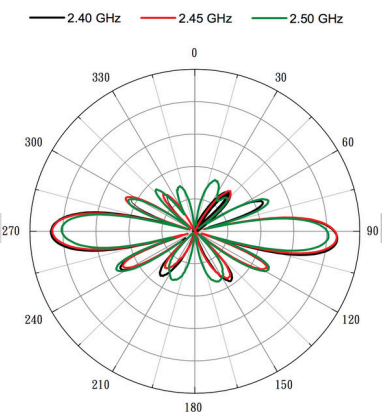
High-traffic **outdoor** environments, **architectural** applications and **bespoke events**.

Article No.	A40505MK2
Type	Omni
Frequency	2.4 GHz / 5.8 GHz
Boost	6 dBi
Radiation (HxV)	360° x 30°
Connection	N Female Incl. Cable 75cm N Male - N Male

~ 1.1 Km (1202 yards)

- Bespoke Events
- Outdoor
- Architectural
- Outside Broadcast
- Dual Band
- Stadiums

W-DMX™ OUTDOOR 8



Best use:

High-traffic outdoor environments, **point-to-point transmissions**, broadcast data through longer distances to a **fixed receiving point**.

Article No.	A40506
Type	Bidirectional
Frequency	2.4 GHz
Boost	8 dBi
Radiation (HxV)	360° x 20°
Connection	N Female Incl. Cable 75cm N Male - N Male

~ 1.3 Km (0.8 miles)

- Point-to-Point
- Repeater
- Skyscrapers
- Stadiums
- Film Sets
- Crowded Environments

Did you know?

For better reception, the antennas should be in line-of-sight, parallel to each other. The front part of an antenna is always where the logo is – in doubt, face the logo on both antennas to each other.

ANTENNAS FOR ALL NEEDS

Guide to **outdoor** range

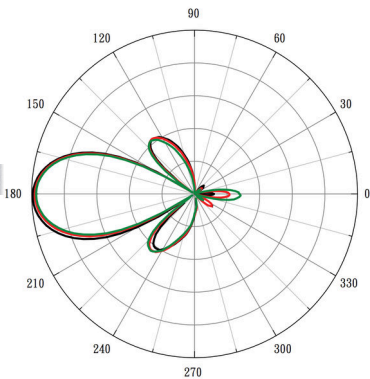
WIRELESS SOLUTION
MADE IN SWEDEN



There is also an indoor range!

W-DMX™ OUTDOOR 12

— 2.4GHz — 2.45GHz — 2.5GHz



Includes fixing bracket.

Best use:

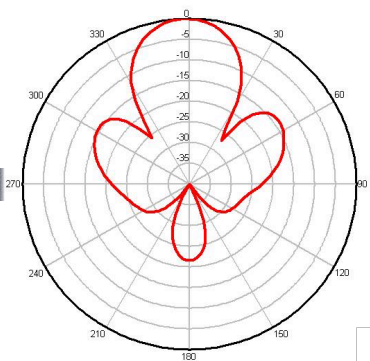
Point-to-point transmissions in outdoor environments. Ideal to use **between buildings** or to penetrate difficult barriers, including **concrete** and **glass**, in **fixed installations**.

Article No.	A40507
Type	Directional
Frequency	2.4 GHz
Boost	12 dBi
Radiation (HxV)	30° x 30°
Connection	N Female Incl. Cable 75cm N Male - N Male

~ 1.6 Km (1 mile)

- Fixed Installations
- Between Buildings
- Façades
- Bridges
- Concrete & Glass
- Architectural

W-DMX™ OUTDOOR 16



Best use:

Perfect for **architectural** installations. Ideal to transmit data between buildings in a **crowded environment**. Only transmits **5.8 GHz**.

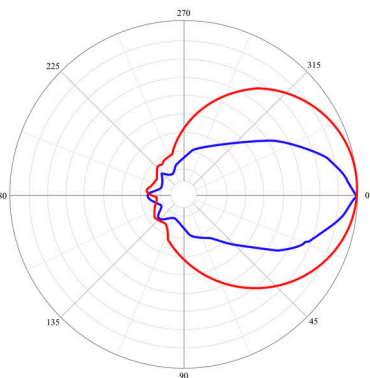
Article No.	A40513G4
Type	Directional
Frequency	5.8 GHz
Boost	16 dBi
Radiation (HxV)	30° x 20°
Connection	N Female Incl. Cable 75cm N Male - N Male

~ 2 Km (1.2 miles)

- Outdoor
- 5.8 GHz
- Fixed Installations
- Themed Attractions
- Crowded Environments
- Stadiums

W-DMX™ OUTDOOR 8/10

— 2.4 GHz — 5.8 GHz



Best use:

Outdoor dual-band applications. Ideal even for **indoor applications** to broadcast data at **longer distances** (e.g., between FOH and stage).

In 5.8 GHz mode, the average L.O.S. distance is 1.5 Km (0.9 miles)

Article No.	A40512G4
Type	Directional
Frequency	2.4 GHz / 5.8 GHz
Boost	8 dBi / 10 dBi
Radiation (HxV)	30° x 30° / 20° x 20°
Connection	N Female Incl. Cable 75cm N Male - N Male

~ 1.3 Km (0.8 miles)

- Point-to-Point
- Repeater
- Bridges
- Themed Attractions
- Dual Band
- Crowded Environments

Did you know?

Antennas have got a vertical and horizontal radiation pattern. Read carefully each one's and take this into consideration when lining up antennas. Be sure the connector is fully tight – if the connection is not solid it might compromise the link quality.

ANTENNAS FOR ALL NEEDS

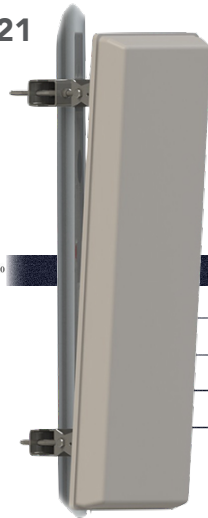
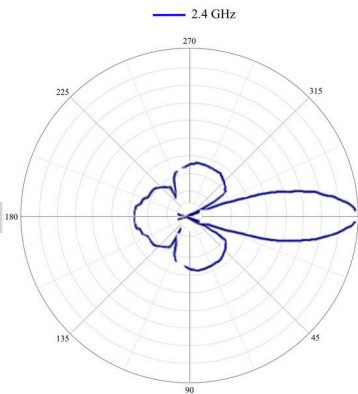
Guide to outdoor range

WIRELESS SOLUTION
MADE IN SWEDEN



There is also an indoor range!

W-DMX™ OUTDOOR 21



Best use:

Transmit data to/from top of **high buildings**, **very long distances**, **through rivers** and a very specific point at a long distance.

Article No.	A40508
Type	Directional
Frequency	2.4 GHz
Boost	21 dBi
Radiation (HxV)	7° x 7°
Connection	N Female Incl. Cable 75cm N Male - N Male

Includes fixing bracket.

~ 2.5 Km (1.5 miles)

Skyscrapers

Natural Obstacles

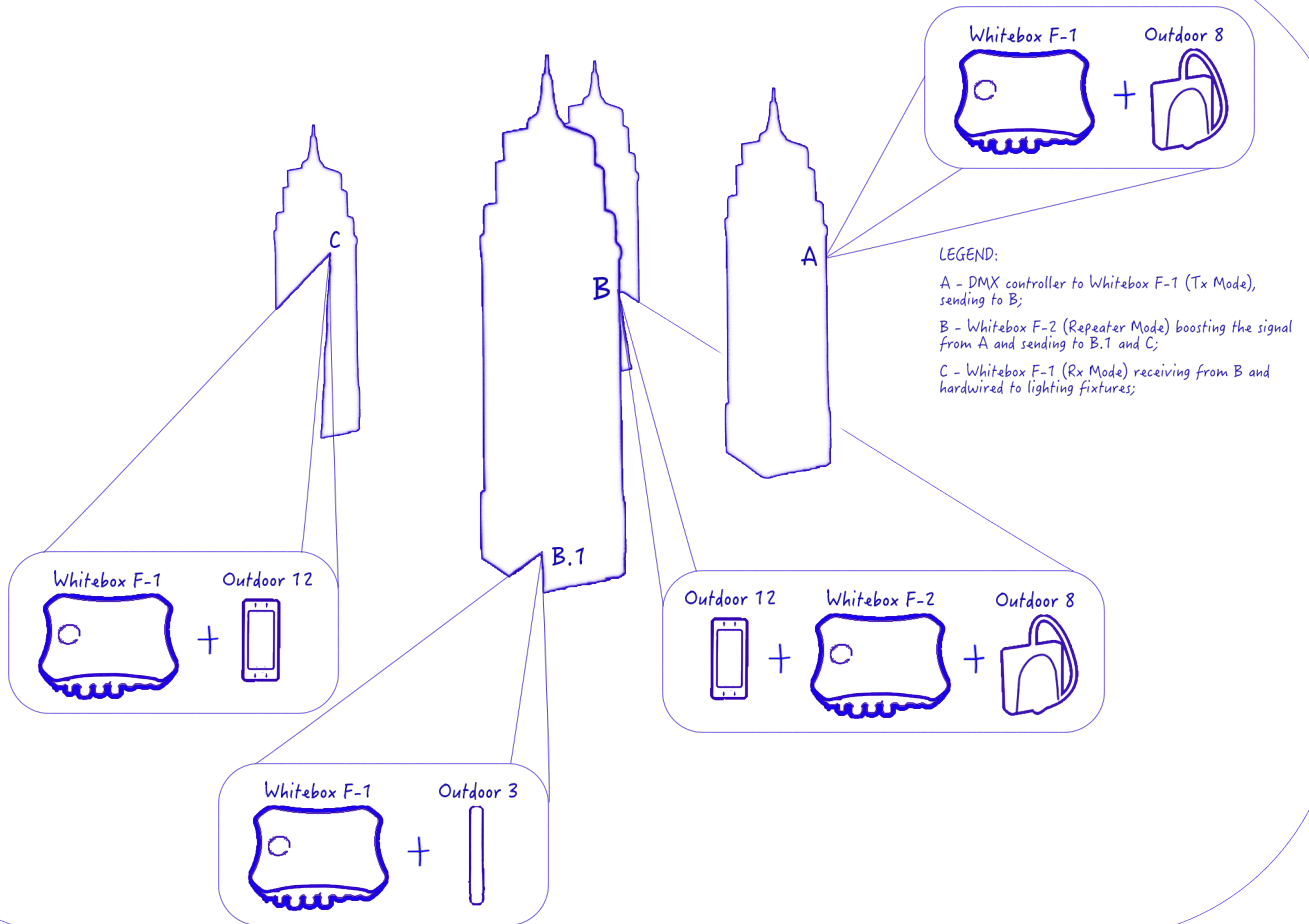
Façades

Bridges

Concrete & Glass

Architectural

Practical Example



Did you know?

Keep in mind, all larger antennas demand a little more planning. Please contact Wireless Solution or your distributor for guidance on how to install these.